



Fire Assay Consumables



Furnace Technologies can supply **Fire Assay Consumable** products and chemicals for a variety of production situations and processes.

Fire Assay Crucibles



Fire Assay Crucibles or “Pots” are used during the fire assaying process to contain the mixed sample and various chemicals while being heated in a furnace to a temperature of 1100°C. **Furnace Technologies** can supply quality Fire Assay Pots in the standard sizes of **20gram, 30gram, 40gram, 50gram and 65gram**. Non standard sizes can be supplied on request.





Fire Assay Consumables

Cupels

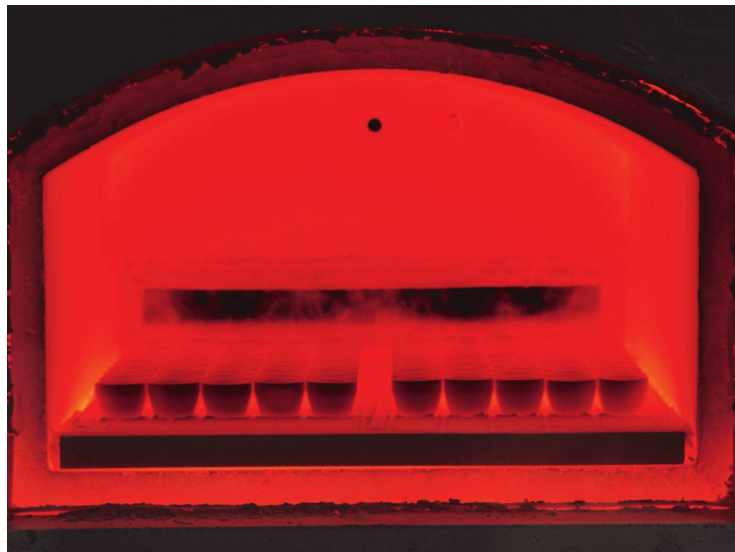


Furnace Technologies supplies a range of high quality cupels for the absorption of PbO or litharge during the Fire Assay Cupellation process.

Available standard sizes are:

- 6A
- 7A
- 7AS
- 7AL
- 8
- 8A

Other sizes can be obtained on request.



Fire Assay Flux

Furnace technologies supplies high quality Fire Assay Fluxes as premixed standard fluxes or mixed to your requirements.

Fluxes can be supplied in a variety of packaging options and in bulk if required.

Low Gold specification fluxes are available as part of our standard range.





Fire Assay Consumables

Chemicals, Glassware, Hardware and General consumables

Furnace Technologies is able to supply any items required to undertake the Fire Assay process. If it is not listed below we can get it for you, just contact sales@furnace-technologies.com.au and we would be glad to help.

- 16 x 150mm borosilicate test tubes
- Test tube racks
- Paper Cups
- Borax
- Litharge
- Bakers Flour
- Bone Ash
- Fluorspar
- Maborite
- Niter (potassium nitrate)
- Silica flour
- Soda Ash
- Hydrochloric Acid
- Nitric Acid
- Sulphuric Acid
- Silver Nitrate
- Silver Wire
- Hot plates
- Sand baths
- Silica Sand
- Fire Assay tools
- Multi Pour tools and trollies
- Moulds
- Safety equipment

